



DELTA LIFE SKILLSsm



EMOTIONAL FREEDOM IS IN YOUR HANDS with EFPsm

Integral Energy Psychology

Phillip W. Warren, B.A., Ph.C., Zetetic Scholar, Professor Emeritus

4459 52A St., Delta, B.C., V4K 2Y3 Canada

Phone and voice mail: (604) 946-4919

E-Mail: phillip_warren@telus.net

Website: www.rebprotocol.net

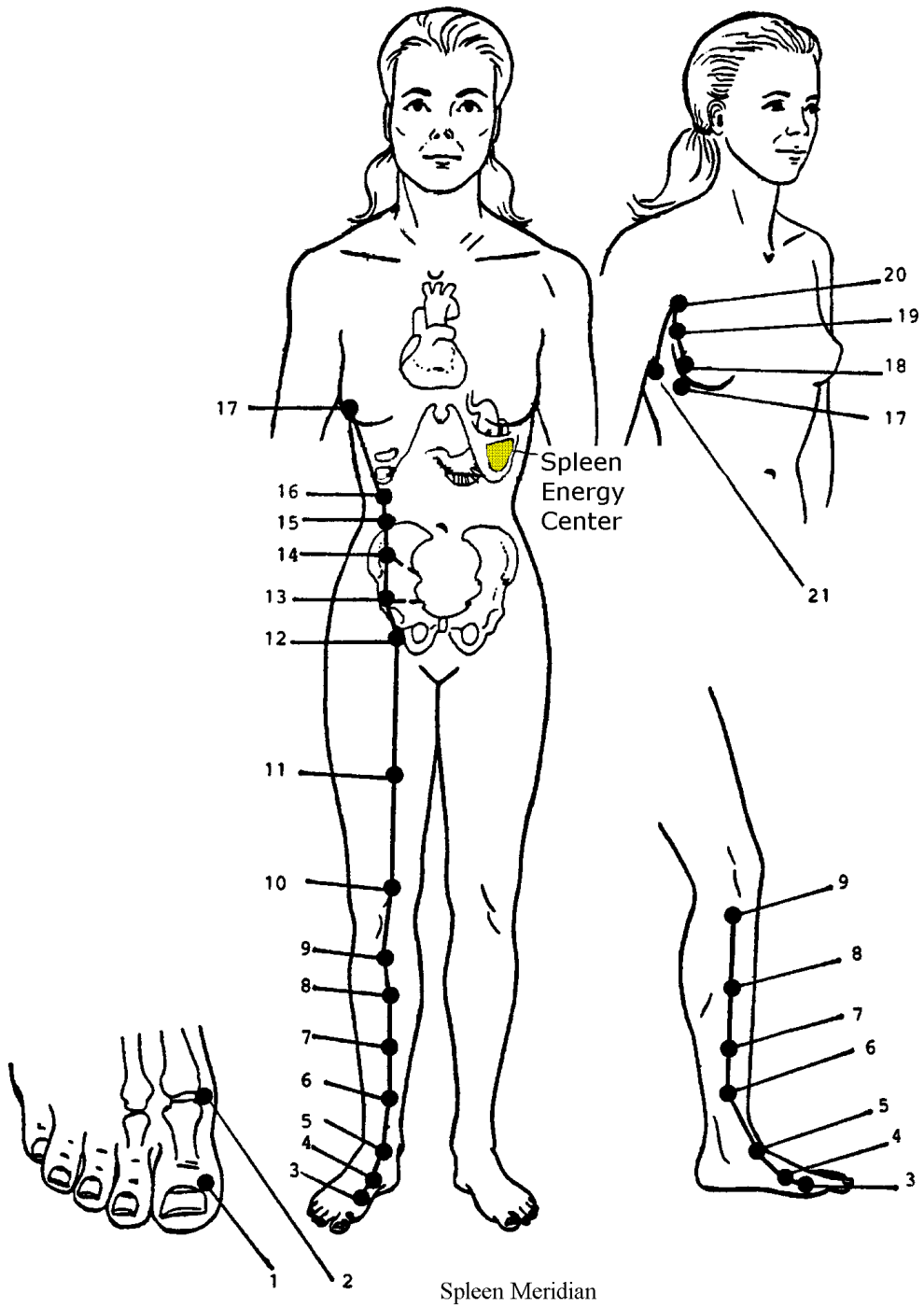
U.S. mailing address: P.O. Box 1595, Point Roberts, WA 98281-1595

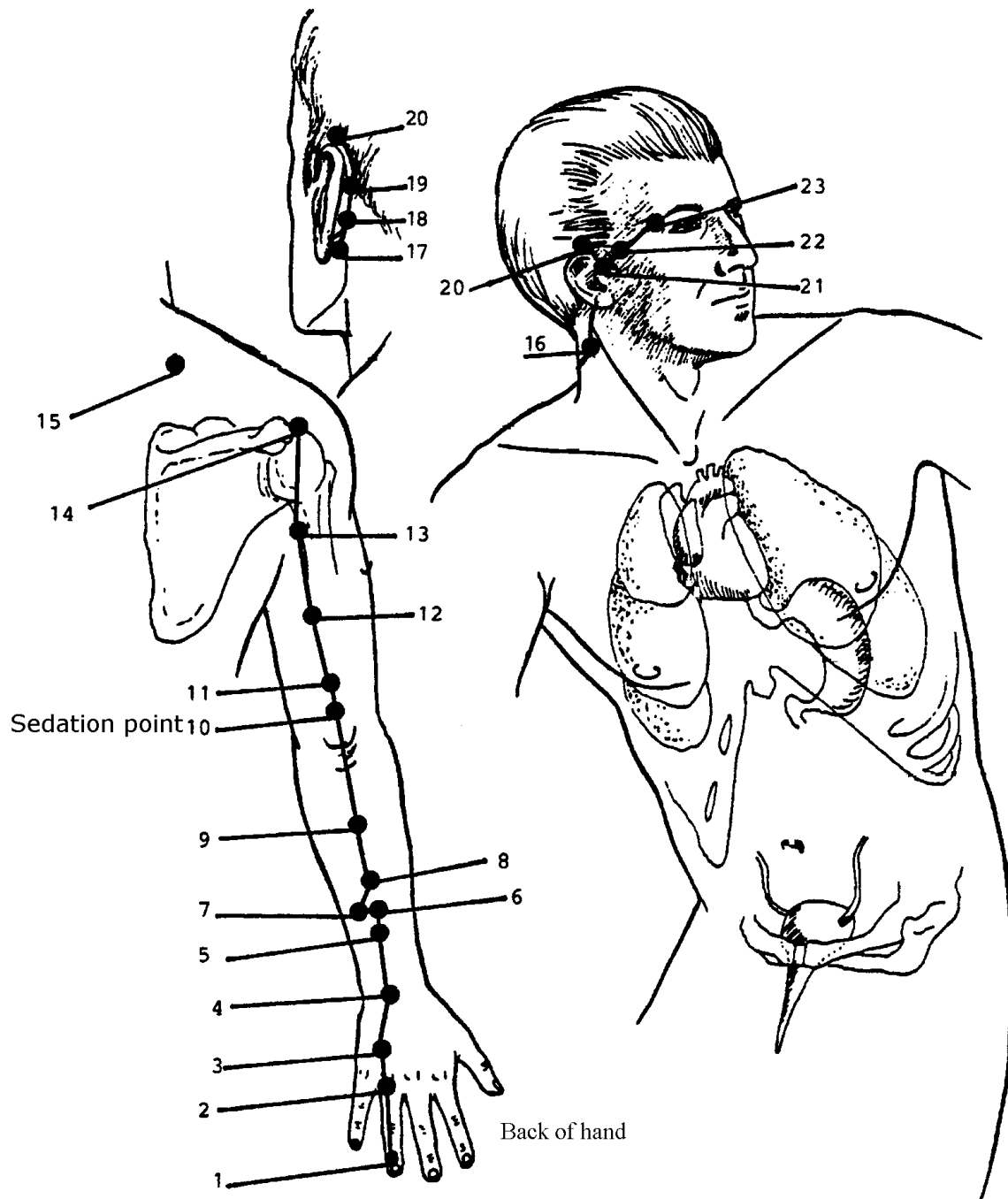
Δ∞X

The major body energy/information systems used in the Radiant Energies Balance (REB)sm protocol

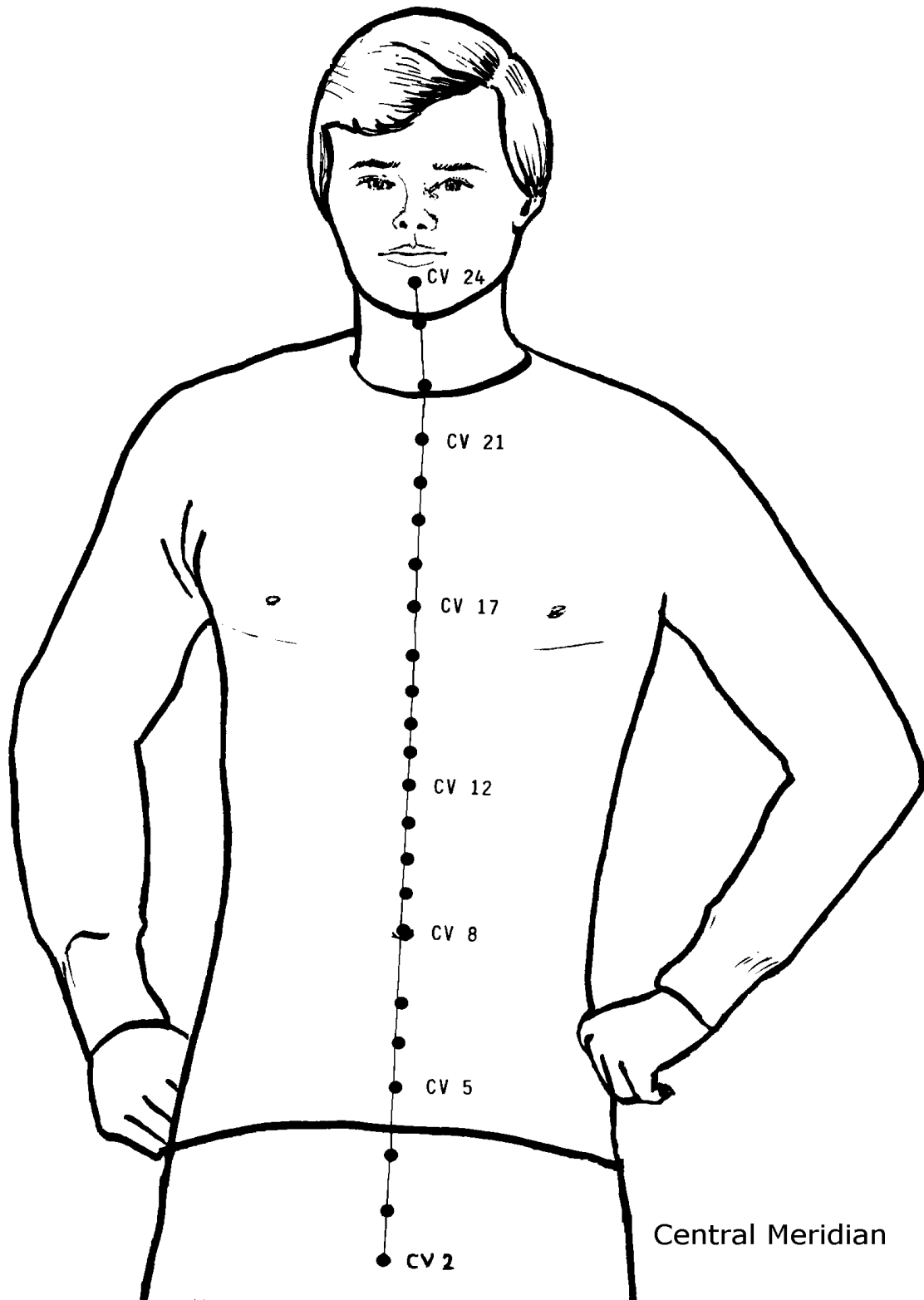
2004/November

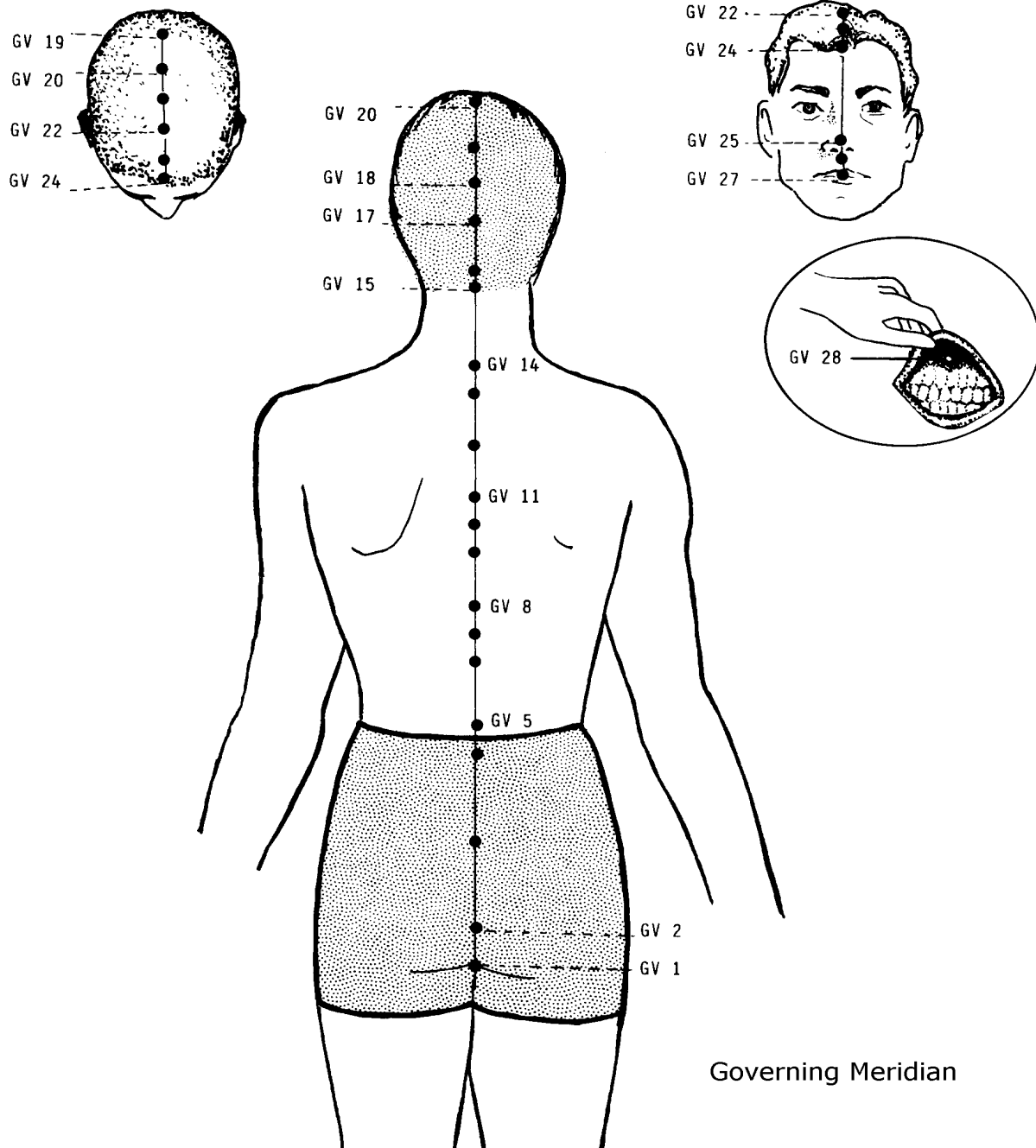
The figures for Triple Warmer, Spleen and the Chakras are simplified from Levy, S.L and C. Lehr (1996, Your Body Can Talk: How to Use Simple Muscle Testing to Learn What Your Body Knows and Needs: The Art and Application of Clinical Kinesiology, Hohm Press) The original figures they used are by Dr. John Amaro, International Academy of Clinical Acupuncture, 1981. The Central and Governing meridians are from Biokinesiology Institute (1977/1984) Take Care of Yourselves Naturally. The parasympathetic and sympathetic diagrams are edited from Alcamo, I.E. (1997) Anatomy Coloring Workbook, Random house.



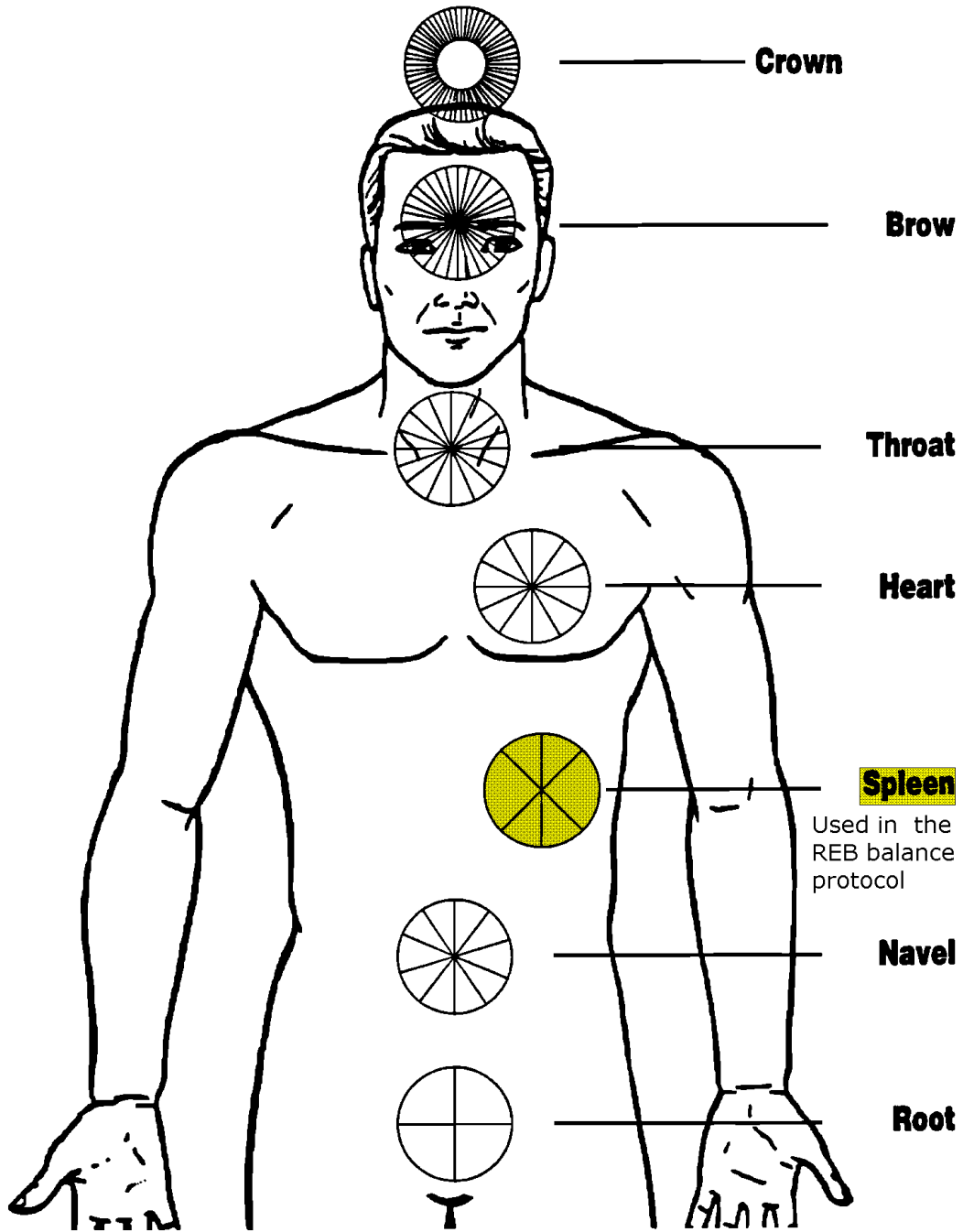


TRIPLE WARMER MERIDIAN [Thyroid]



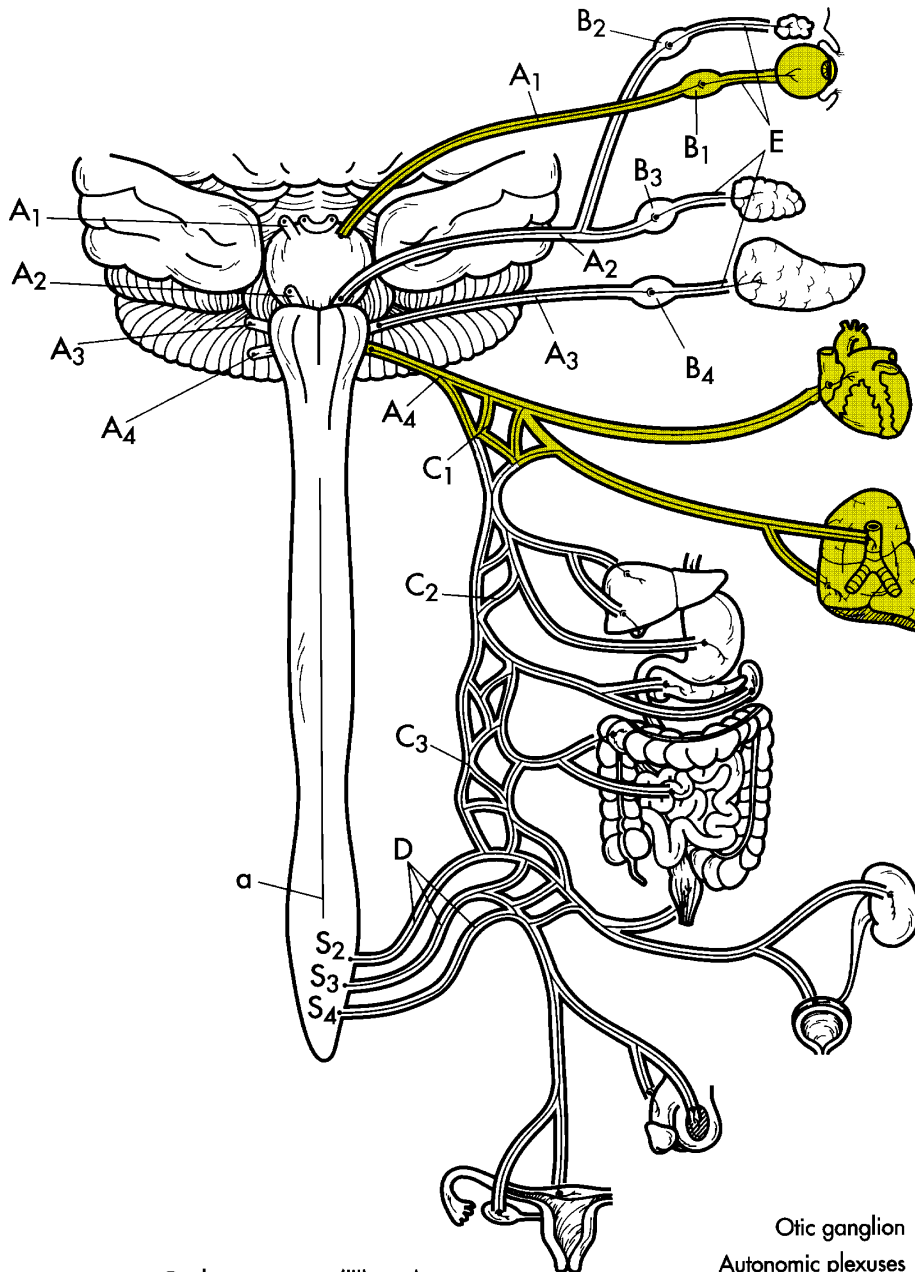


Governing Meridian



THE CHAKRAS

THE AUTONOMIC NERVOUS SYSTEM (PARASYMPATHETIC)

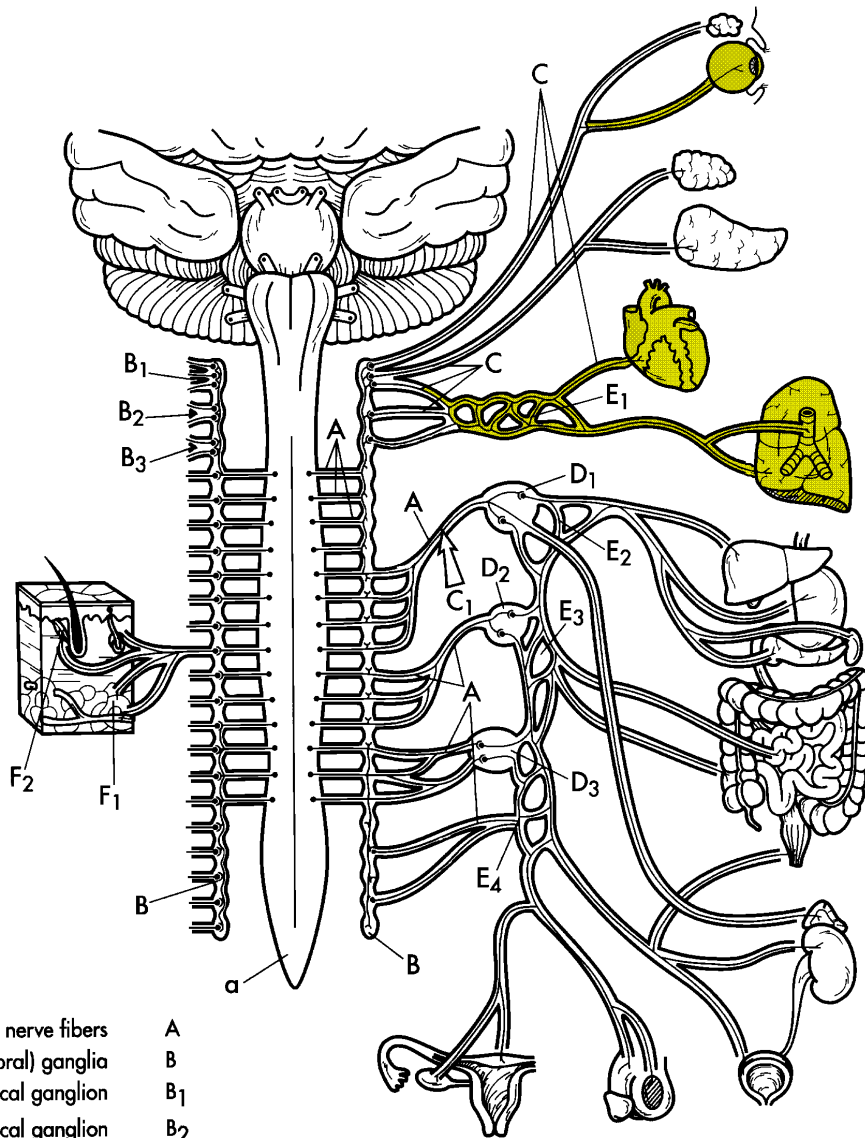


- Oculomotor nerve (III) A₁
- Facial nerve (VII) A₂
- Glossopharyngeal nerve (IX) A₃
- Vagus nerve (X) **A₄**
- Terminal ganglia B
- Ciliary ganglion **B₁**
- Pterygopalatine ganglion B₂
- Submandibular ganglion B₃

● = Systems targeted in the REB protocol

- Otic ganglion B₄
- Autonomic plexuses C
- Cardiopulmonary plexus **C₁**
- Celiac plexus C₂
- Hypogastric plexus C₃
- Pelvic splanchnic nerves D
- Postganglionic nerve fibers E
- Pelvic splanchnic nerves D
- Sacral nerves S₂-S₄
- Spinal cord a

THE AUTONOMIC NERVOUS SYSTEM (SYMPATHETIC)



- Preganglionic nerve fibers A
- Sympathetic (vertebral) ganglia B
- Superior cervical ganglion B₁
- Middle cervical ganglion B₂
- Inferior cervical ganglion B₃
- Postganglionic nerve fibers C
- Splanchnic nerve C₁
- Collateral (Prevertebral) ganglia D
- Celiac ganglion D₁
- Superior mesenteric ganglion D₂
- Inferior mesenteric ganglion D₃
- Plexuses E
- Cardiopulmonary plexus E₁

● = Systems targeted in the REB protocol

- Celiac plexus E₂
- Superior mesenteric plexus E₃
- Inferior mesenteric plexus E₄
- Skin blood vessel F₁
- Arrector pili muscle F₂
- Spinal cord a